



# Penn Fields School Newsletter

Where every moment is a learning opportunity and that every moment matters

Boundary Way Penn Wolverhampton West Midlands WV4 4NT. Tel No (01902) 558640 Website: [www.pennfields.com](http://www.pennfields.com) Email: [office@pennfields.com](mailto:office@pennfields.com)

Issue 164 Friday 13th February 2026

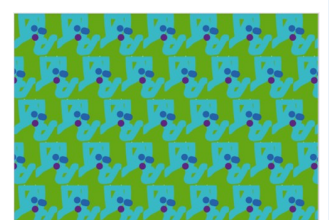
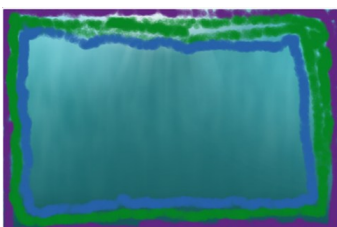
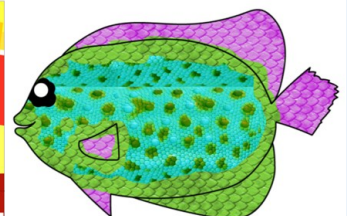
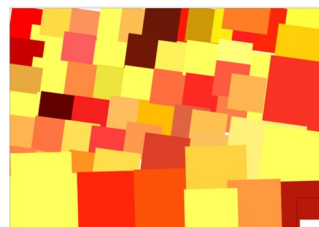
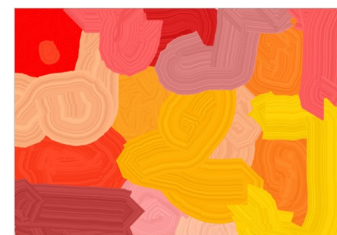
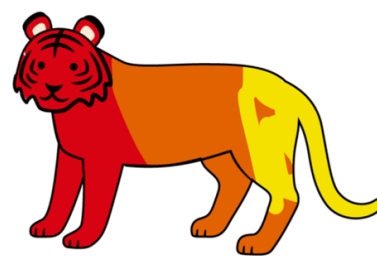
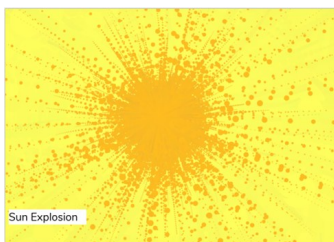
## The Runaway Pancake!

Ash Class have been enjoying our story this week about the Runaway Pancake. We have learnt the core word to run. Students have enjoyed making each other pancakes in the Pancake Cafe and counting money as part of Money Week. We have also enjoyed making our own art pancakes and choosing different toppings to taste in cooking.



## Digital Art

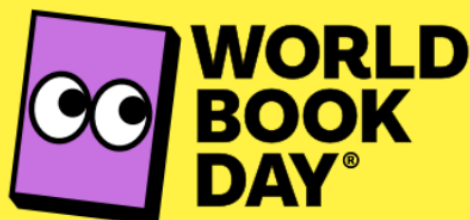
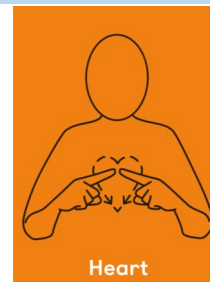
This half term in Digital Art, pupils from KS3 have been exploring warm and cool colours. They have used red, orange and yellow to create bright, happy and energetic paintings with warm colours. Whilst choosing blue, green and purple to create calm, safe and relaxing artwork using cool colours.



This weeks sign is **Heart**.

For more information about Makaton, videos and signs of the week please visit:

<https://www.makaton.org/>



An exciting time of the year is approaching where we will celebrate our love of reading. Dressing up as your favourite book character on **Thursday 5<sup>th</sup> March** is optional. We will also be hosting a **reading workshop** and a **book cafe for parents and carers** on the same day. Times to follow.



Join us for...

# GAME & CHILL

Join the Reflexions team for a fun day where children, young people and families can enjoy their favourite board games together – a chance to make friends, connect and share laughs in a relaxed, supportive space.

Parents to accompany children under 13 years old

**10:30 - 16:00**

**Wolverhampton Art Gallery**  
Lichfield St,  
Wolverhampton WV1 1DU

**DATES:**

Wednesday 18 <sup>th</sup> February	Wednesday 29 <sup>th</sup> July
Wednesday 1 <sup>st</sup> April	Wednesday 5 <sup>th</sup> August
Wednesday 8 <sup>th</sup> April	Wednesday 12 <sup>th</sup> August
Wednesday 27 <sup>th</sup> May	Wednesday 19 <sup>th</sup> August
Wednesday 26 <sup>th</sup> August	

For additional information or brief sign up form to register your attendance, please email [bchft.reflexions@nhs.net](mailto:bchft.reflexions@nhs.net) or feel free to pop in!



Sixth form have been decorating letters as part of our work for National children's mental health week. They used bright colours, pictures and words to represent this years theme 'This is my place'.



## Term Dates 2025 - 2026

### Spring Term 2026

Tuesday 6th January to Friday 13th February

Half Term - Monday 16th February to Friday 20th February

Monday 23rd February to **Friday 27th March - School Closes Early**

**Early Closure Times: Lower school 12.45pm Upper School 13.15pm**