



Penn Fields School Newsletter

Where every moment is a learning opportunity and that every moment matters

Boundary Way Penn Wolverhampton West Midlands WV4 4NT. Tel No (01902) 558640 Website: www.pennfields.com Email: office@pennfields.com

Issue 88 Friday 1st March 2024



Sixth form have been making Jewellery boxes at WVTC this week.

At WVTC the curriculum is specifically designed to enable young people to develop their personal, social and independence skills alongside skills for employment in the future.



Duke of Edinburgh's Award

Last week was National Nestbox Week and for the last few weeks the Outdoor Learning Lodge has been transformed into a bird nestbox factory. All of the Bronze Duke of Edinburgh's Award groups have been busy building bird boxes as part of their conservation volunteering. Various different design nestboxes have been made to attract a variety of birds such as blue tits, great tits, robins and wren's into the sensory garden. In total 20 boxes were made and are now all proudly positioned around the school hoping to provide homes for many families of birds.



Learning Outside the Classroom Ceramics

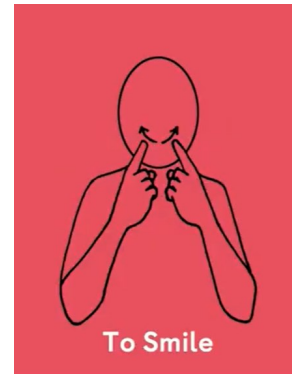
On Friday 4R went to Gladstone Pottery Museum. Students learnt how pottery was made by hand and the different techniques that were used. They also had the opportunity to create their own pencil pot.



Sandwich Artists

Students in Year 7 are learning how to be sandwich artists in Creative Arts this half term. They evaluated different types of bread this week, to find out which one they liked the best to help them design and make their own sandwich.





This weeks sign of the week is to **smile**.
 For more information about Makaton,
 videos and signs of the week please visit:
<https://www.makaton.org/>

Please be aware if using “Miss Rachel” videos for Makaton that she uses American Makaton and so the signs are different from the British Makaton that we use in school.

SMART SCHOOL COUNCIL

QUESTION

The season of Spring officially starts on the 20 March.
 What are you most looking forward to about Spring-time?



QUESTION OPTIONS

- New flowers and leaves on trees
- Hearing the birds singing
- Warmer weather

WINNING OPTION

Warmer weather



Parent / Carers

Basic Maths / Budgeting Workshops
12th March & 23rd April 9.30—11.30

We have two maths sessions for parents/carers to support your maths skills and help provide budgeting advice and support with planning your finances. The sessions are supported by Access to Business, a local Wolverhampton based charity. Further details to follow.

www.access2business.co.uk

Spring Term 2024

Term Time: Monday 19 February 2024 to Friday 22 March 2024 – **School Closes Early**

Early Closure Times:

Lower School 12.45 Upper School 1.15

Dates for your diary

Parent / Carer Workshop ‘Sport & Being Active at Home’: Wednesday 6 March 9.15-10.00

World Book Day: Thursday 7 March

Stories and Songs Day : Thursday 7 March

Coffee & Chat – 9.15 - 10.30

Thursday 7th March

Thursday 11th April

Thursday 2nd May

Thursday 6th June

Thursday 4th July



Stories & Songs

