



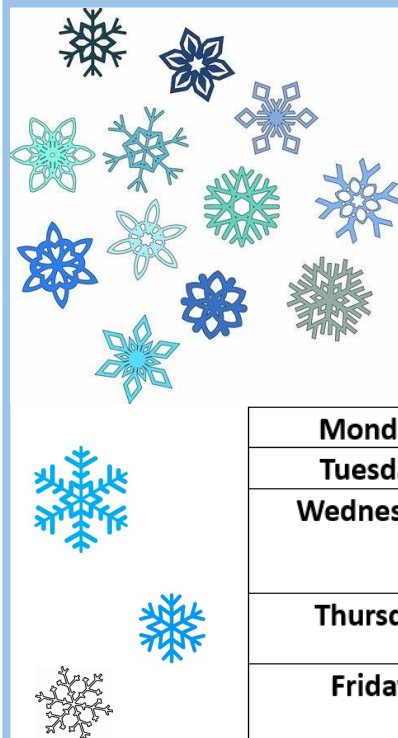
# Penn Fields School Newsletter

Where every moment is a learning opportunity and that every moment matters

Boundary Way Penn Wolverhampton West Midlands WV4 4NT. Tel No (01902) 558640

Website: [www.pennfields.com](http://www.pennfields.com) Email: [office@pennfields.com](mailto:office@pennfields.com)

Issue 80 Friday 15th December 2023



## Christmas Week Schedule 2023

<b>Monday 18<sup>th</sup> December</b>	Christmas Dinner for Lower School
<b>Tuesday 19<sup>th</sup> December</b>	Christmas Dinner for Key Stage 3
<b>Wednesday 20<sup>th</sup> December</b>	Christmas Dinner for Key Stage 4 H5 Activities Lower School, Y7, Y8, 4E & Sixth Form
<b>Thursday 21<sup>st</sup> December</b>	Whole School Christmas Jumper Day H5 Activities Year 9, KS4 & Sixth Form
<b>Friday 22<sup>nd</sup> December</b>	End of Term Assemblies via Zoom Class Christmas Activities School Closes Early: Lower School 12.45pm Upper School 13.15pm



Students to wear comfortable clothes for H5 activities

Class Christmas Parties will be arranged by Tutor Group Teams

### Smart School Council

#### QUESTION

On Tuesday 19th December, there is a ceremony to decide who will win the 'Sports Personality World Sport Star of the Year'. Who do you think should win?

#### QUESTION OPTIONS

- A gymnast who struggled with mental health, but won 4 gold medals
- A rugby player who had a knee injury but helped his country win the world cup
- A female footballer who won the World Cup and Champions League
- A tennis player who has won 23 tennis awards, the most won by a man
- A racing driver who has become world champion for the third time

#### WINNING OPTION

A female footballer who won the World Cup and Champions League



This weeks sign of the week is **Christmas Tree**.

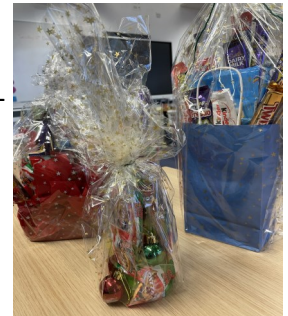
For more information about Makaton, videos and signs of the week please visit:

<https://www.makaton.org/>



### Maths Enterprise Challenge

Key stage 4 students have made chocolate and sweet bouquets, these will be raffled off in school, 30p a raffle ticket or a strip of 5 tickets for £1. Key stage 4 students will be visiting tutor groups during morning registration to sell these, tickets are also available from Mrs Sharp in P1. The draw will be held on Thursday 21<sup>st</sup> December.



Thank you for your support.

Penn Fields would like to invite you to our **Book Café**

**Date:** Tuesday 19<sup>th</sup> December

**Time:** Pop in anytime between 9.15 am and 10.30am

Mince pies will be served along with a selection of drinks made by our 6<sup>th</sup> Form baristas

Come and join us for a coffee and a chat with a member of the English team.

There will be a selection of books available for you and your child to choose and borrow for home.

If you can attend, please call or email [office@pennfields.com](mailto:office@pennfields.com) to confirm your place.



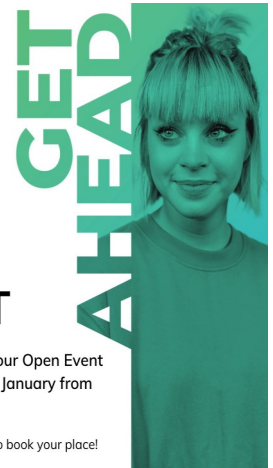
### Dudley College Open Event



## OPEN EVENT

Register now for our Open Event on Saturday 13th January from 10am - 2pm.

Visit [dudleycol.ac.uk](http://dudleycol.ac.uk) to book your place!



### Dates for your Diary

#### Autumn Term 2023

**Book Café:** Tuesday 19 December 9.15am - 10.30am

**Christmas Jumper Day:** Thursday 21 December

**Term Time:** Monday 6 November 2023 to Friday 22 December 2023 – **School Closes Early**

#### **Early School Closure Times:**

**Lower School:** 12.45pm    **Upper School:** 13.15pm

#### Spring Term 2024

Monday 8 January 2024 – **School Closed – INSET Day**

**Term Time:** Monday 8 January 2024 to Friday 9 February 2024

**Half term:** Monday 12 February 2024 to Friday 16 February 2024

**Term Time:** Monday 19 February 2024 to Friday 22 March 2024 – **School Closes Early**

