



Penn Fields School Newsletter

Where every moment is a learning opportunity and that every moment matters

Boundary Way Penn Wolverhampton West Midlands WV4 4NT. Tel No (01902) 558640

Website: www.pennfields.com Email: office@pennfields.com

Issue 76 Friday 10th November 2023

The Great Outdoors!

Year 13 and 14 students enjoyed a practice expedition just before half term. They camped on the school field and cooked a meal using the Trangia stoves. They also enjoyed an evening in our new sensory garden around a campfire cooking marshmallow and making s'mores. The next day the group completed a 5 mile walk in the local area. The weather was very kind, and everyone had a fantastic time.



Remembrance Day

Students have made and displayed poppies in the school grounds for Remembrance day. This followed a Remembrance Day assembly for upper school students on Monday marking the importance of remembering the sacrifice of those who fought and died in World War I and in other wars since.



Smart School Council

QUESTION

Some people worry that, now that all WWI veterans have passed away, people will begin to forget. How do you think we could make sure that future generations are aware of the importance of Remembrance Day?

QUESTION OPTIONS

- Compulsory education about WWI
- More museums and memorials dedicated to this subject
- Continue doing what we are doing
- Share WWI stories
- Other

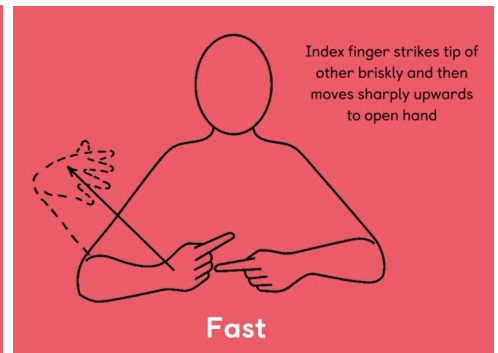
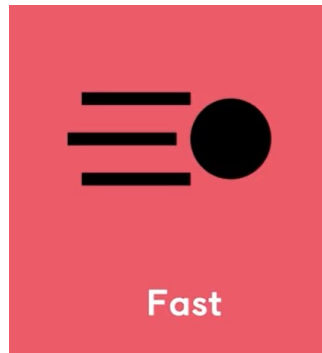
WINNING OPTION

Share WWI stories



This weeks sign of the week is **Fast**.
For more information about Makaton,
videos and signs of the week please visit:

<https://www.makaton.org/>



MATHS WEEK

13th – 17th November 2023

Students across school will be enjoying in a range of activities during their maths lessons next week.

On Wednesday we will be holding a sale of items made by the students, prices range from 10p to 50p an item. This will be outside the maths rooms on purple floor during lunch.

Secondary phase students will end the week with one of fabulous maths murder mysteries! Can students solve the clues to find out who has committed the crime?!

Parent / Carer Maths Workshop

On Tuesday 14th November at 9am the maths department will be running a parent / carer workshop.

The Maths Team would like to invite parents to come along and learn about numicon, what it is and how to use it. There will also be demonstrations from the maths intervention team, to show you the wonderful work that happens in interventions as well as providing you with some ideas of resources and activities that can be made in the home to help practice those all important maths skills.

We look forward to seeing you.

The Maths team.



Dates for your Diary

Autumn Term 2023

Maths Parent / Carer Workshop: Tuesday 14 November 9.00-10.00 am

Term Time: Monday 6 November 2023 to Friday 22 December 2023 – **School Closes Early**

Monday 4 December 2023 – **School Closed – INSET Day**

Spring Term 2024

Monday 8 January 2024 – **School Closed – INSET Day**

Term Time: Monday 8 January 2024 to Friday 9 February 2024

Half term: Monday 12 February 2024 to Friday 16 February 2024

Term Time: Monday 19 February 2024 to Friday 22 March 2024 – **School Closes Early**

