



Penn Fields School Newsletter

Where every moment is a learning opportunity and that every moment matters

Boundary Way Penn Wolverhampton West Midlands WV4 4NT. Tel No (01902) 558640 Website: www.pennfields.com Email: office@pennfields.com

Issue 89 Friday 8th March 2024

New parking procedures for student drop off and collection will come into effect on Monday 11th March. Letters with full details have been shared with parents who drop off and collect their children.

We thank you for your support with these changes.

All student drop off 8:30am—8:45am

Primary collection 2:30pm

Secondary collection 3:05pm



Sixth Form Enterprise

Sixth form have been repotting and dividing up the class plants this week so they can sell them in school and make money towards their sixth form funds.



Learning Outside the Classroom

Oak and Elm class have been planting seeds and making seed bombs, ready to make a bee and butterfly patch in our sensory garden.

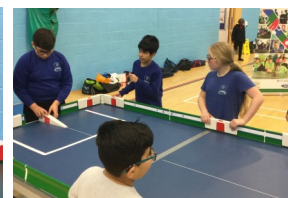


Science Week

Monday 11th March marks the beginning of science week and we will be celebrating it on Monday with a Science Boffins assembly and workshops and then ending the day with a super high rocket demonstration. There will be a change of menu on Monday to reflect the day. Students will have the choice of a burger box and chips with petri-dish jelly for pudding. Usual lunch time options will still be available as will Vegetarian and other dietary requirement options.

Table Cricket Competition

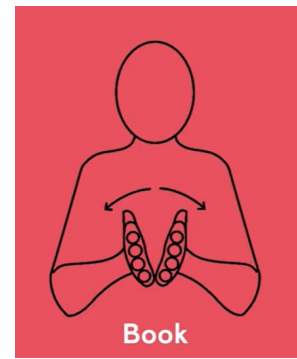
7J went to the West Croft School on 5th of March for a Table Cricket National Competition. They played matches with different school groups competing though-out the day. They all had an enjoyable experience, fun-filled day and were awarded with a participating certificate during the presentation at the end.





This weeks sign of the week is to **Book**.
For more information about Makaton,
videos and signs of the week please visit:

<https://www.makaton.org/>



SMART SCHOOL COUNCIL

QUESTION

World book day will take place on Thursday 7th March 2024. What is your favourite book genre?

QUESTION OPTIONS

- Adventure
- Fantasy/Sci Fi
- Non Fiction
- Fairytales/Folklore



WINNING OPTION

Adventure

Parent / Carers Basic Maths / Budgeting Workshop 12th March 9.30—11.30

We have a maths session for parents/carers to support maths skills and help provide budgeting advice and support with planning your finances. The session is going to be supported by Access to Business, a local Wolverhampton based charity. Please contact school to confirm your attendance. We look forward to seeing you on Tuesday.

www.access2business.co.uk



Parents and Carers of year 11 students who are choosing to join sixth form in September are invited to meet our partner colleges in school on **Thursday 14th March from 9.15am**.

Staff from **WVTC, Rodbaston** and **Dudley** colleges will provide information and guidance about the two day offer for our sixth form students.



Spring Term 2024

Term Time: Monday 19 February 2024 to Friday 22 March 2024 – **School Closes Early**

Early Closure Times:

Lower School 12.45 Upper School 1.15

Dates for your diary

Coffee & Chat – 9.15 - 10.30

Thursday 11th April

Thursday 2nd May

Thursday 6th June

Thursday 4th July

