



Penn Fields School Newsletter

Where every moment is a learning opportunity and that every moment matters

Boundary Way Penn Wolverhampton West Midlands WV4 4NT. Tel No (01902) 558640 Website: www.pennfields.com Email: office@pennfields.com

Issue 85 Friday 31st January 2024

MFL Drop Down Day

The whole school took part in a Spanish themed day this week to experience the Spanish language and find out more about Spanish culture. Students took part in a wide range of activities such as Flamenco dancing, cooking, art and food tasting.



National Story Telling Week

4E went to the enchanted library to choose their favourite stories. Each student chose their favourite book independently and then proceeded to tell the class or small group why they liked the book. Some of the class even volunteered to present their favourite book during this week's assembly for National Storytelling week.



Learning Outside the Classroom

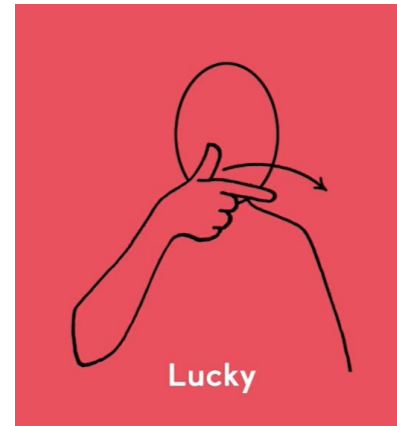
As part of our Spanish day celebrations, Nurture made paper mache pinatas in their forest school lesson! They filled them with tasty sweet treats and decorated them in bright fiesta colours!





This weeks sign of the week is **Lucky**.
For more information about Makaton,
videos and signs of the week please
visit:

<https://www.makaton.org/>



SMART SCHOOL COUNCIL

QUESTION

Which do you agree with most about our school?

QUESTION OPTIONS

- We need more times for quietness
- We need more times for talking
- The balance of quiet and talk time is perfect

WINNING OPTION

The balance of quiet and talk time is perfect

Penn Fields cake sale

Students will be taking part in a cake sale
on Wednesday 7th February.
Cake will be made as part of our Lower
school Enterprise challenge.

Please support us!

50p a cake




Fabulous February half-term activities

Monday 12th February
Birds of a Feather Activity and Boat Trip 10.30am - 1.00pm
£22 for 1 adult and 1 child, £8 for an extra person. Suitable for younger children

Tuesday 13th February
Flippin' Good Pancakes 10am - 12noon
£5.00 per child. Suitable for 3 years +

Den Building & Fire Lighting 1:30pm - 3:30pm
£5.00 per child. Suitable for 4 years +

Wednesday 14th February
Mythical Creatures Puppet Parade 1:30pm - 3:30pm
£5.00 per child. Suitable for 4 years +

Thursday 15th February
Narrowboat Trip 10am - 2pm
Suitable for 4 years +. £9.00 adult and £7.00 child.

Friday 16th February
Lantern Making 12:30pm - 2:30pm
£5.00 per child. Suitable for ages 4 years +

To book – please call 01902 754612

See our website for further details

<https://www.wildsideac.co.uk/febhalfterm/>

For Terms and Conditions please see our website

<https://www.wildsideac.co.uk/booking-terms-and-conditions/>

Wildside Activity Centre, Hordern Road, Whitmore Reans, Wolverhampton WV6 0HA

Email info@wildsideac.co.uk Website www.wildsideac.co.uk



Dates for your Diary

Spring Term 2024

Coffee and Chat :Thursday 8 February 9.30-10.30

Term Time: Monday 8 January 2024 to Friday 9 February 2024

Half term: Monday 12 February 2024 to Friday 16 February 2024

Term Time: Monday 19 February 2024 to Friday 22 March 2024 – **School Closes Early**

Early Closure Times:

Lower School 12.45 Upper School 1.15

