



Penn Fields School Newsletter

Where every moment is a learning opportunity and that every moment matters

Boundary Way Penn Wolverhampton West Midlands WV4 4NT. Tel No (01902) 558640 Website: www.pennfields.com Email: office@pennfields.com

Issue 95 Friday 3rd May 2024

Ash go to Australia!

Theme

In theme this term, Ash class are exploring different countries. Last week we visited Australia, students tried fairy bread and we explored aboriginal art.



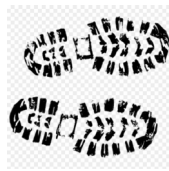
KS4 and 6th form are currently developing their fitness and practicing navigation skills by walking each week to prepare for their expeditions later this term.

Expedition dates:

6th form - 19th to 21st June

4H and 4J - 27th and 28th June

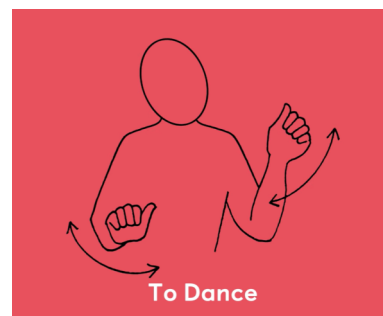
4R and 4DJ - 4th and 5th July



This weeks sign of the week is **to dance**.

For more information about Makaton, videos and signs of the week please visit:

<https://www.makaton.org/>



Willow Wow Work



Care Create Conserve

Exhibition at Central Library

Penn Fields students have been creative contributors towards The Royal Wolverhampton NHS Trust Care, create, conserve project. Their 3D model and collage of the Royal Wolverhampton hospital is on display in The Central Library along with many items, some dating back as early as 1840.



Summer Term 2024

Term Time:

Tuesday 9th April to Friday 24th May 2024

May Bank Holiday Monday 6th May—School Closed

Half term: Monday 27th May 2024 to Friday 31st May 2024

Term Time: Monday 3rd June to Friday 19th July 2024

School Closes Early on Friday 19th July

Early Closure Times:

Lower School 12.45 Upper School 1.15

Dates for your diary

Coffee & Chat – 9.15 - 10.30

Thursday 6th June

Thursday 4th July

