



# Penn Fields School Newsletter

Where every moment is a learning opportunity and that every moment matters

Boundary Way Penn Wolverhampton West Midlands WV4 4NT. Tel No (01902) 558640 Website: [www.pennfields.com](http://www.pennfields.com) Email: [office@pennfields.com](mailto:office@pennfields.com)

Issue 110 Friday 4th October 2024

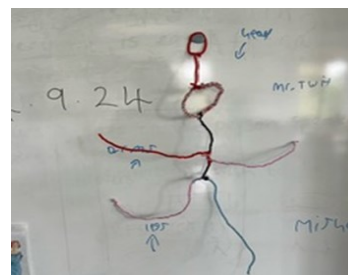
## English

In English, 6<sup>th</sup> form have been completing a speaking and listening assessment where they were able to design their own perfect holiday and could decide which advert was the best for a holiday to Tobago or the Seychelles!

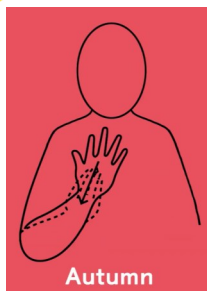
Years 10 and 11 have been working on a unit dedicated to style which has seen them deciding which fashions they prefer from bygone eras; it has allowed them to showcase their own favourite items of clothing, we have had biker jackets, trainers, designer hooded sweatshirts to name but a few!

In years 8/9 the classes have been reading "Friend or Foe" or "Goodnight Mr Tom" both texts have a breadth of information relating to evacuees during times of conflict, this has promoted discussions about what it would be like to experience being taken away from all that is familiar and plunged into a world of uncertainty.

Year 7 have been reading "The Twits" and have had great fun completing a drama activity using Mrs Twit's walking stick alongside making sensory versions of Mr and Mrs Twit out of playdough and pipe cleaners!



To ensure students can enjoy fun, safe football sessions during breaks we have decided there are to be **no footballs** brought into school. Football sessions for students are available during breaks with Mr Byrne and Mr Jones and school provides the footballs for these.



This weeks sign of the week is: **Autumn.**

For more information about Makaton, videos and signs of the week please visit:

<https://www.makaton.org/>

## Cafe 6<sup>th</sup> form

Café 6th Form is run by our 6th form students and is open every Friday morning to all KS3, KS4 and KS5 students.

**Hot drinks are £1.50** each and include Hot Chocolate and a variety of barista style coffees.

**Paninis are £2.00** each, fillings include:

- Cheese
- Cheese and Ham
- Cheese and Beans
- Cheese and Onion

There is a Panini special each week, next week is 'Pepperoni Pizza Panini'.

Please send money in a named, sealed envelope or purse / wallet with child's name written inside.

## Speech and Language Support -Blank Level Part 2

There are different types of questions, some are easier to understand than others, for example, 'Where's the pen?' is easier to answer than 'why is it raining?'



Some researchers have categorised questions into four different levels (the Blank Levels). The closer the adult's language is to the present situation, the easier the question is to answer.

### Level 2

The questions relate to things the child can see but they need to focus on a part of it selectively.

Type of question	Examples
Thinking about the function of objects	<i>What could you drink?</i>
Completing sentences	<i>You water the garden with a.....</i>
Things that go together	<i>What goes with knife?</i>
Sorting and categorising.	<i>What else can grow in the ground?</i>
Give an example with objects in sight	<i>Name another fruit (child can see the objects)</i>
Focusing on concepts e.g. colour, size, number	<i>Find a green bird</i> <i>Find a big animal</i> <i>Find two flowers</i>
Describing a scene	<i>What's happening?</i> <i>What's happening in the picture?</i>
Showing a picture or giving information and asking:	<i>'Mum planted bulbs in the garden'</i>
Who?	<i>Who planted the bulbs?</i>
What?	<i>What did she plant?</i>
Where?	<i>Where was she?</i>

## Autumn Term 2024

**Term Time:** Wednesday 4 September 2024 to Friday 25 October 2024

**Half term:** Monday 28 October 2024 to Friday 1 November 2024

**Term Time:** Monday 4 November 2024 to Friday 20 December 2024

School Closes Early Friday 20 December 2024

Lower School 12.15pm - Upper School 1.15pm

### Dates for your Diary this Half Term (Subject to Change)

**Tuesday 8 October** Flu Vaccinations in school

**Thursday 10 October**—J Nock Parent /Carer Primary Workshop

**Monday 14 October** –Tutor Progress Meetings

**Wednesday 16 October**—Tutor Progress Meetings

**Friday 18 October**—School Photographs

