



Penn Fields School Newsletter

Where every moment is a learning opportunity and that every moment matters

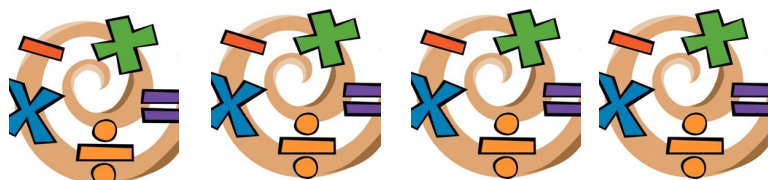
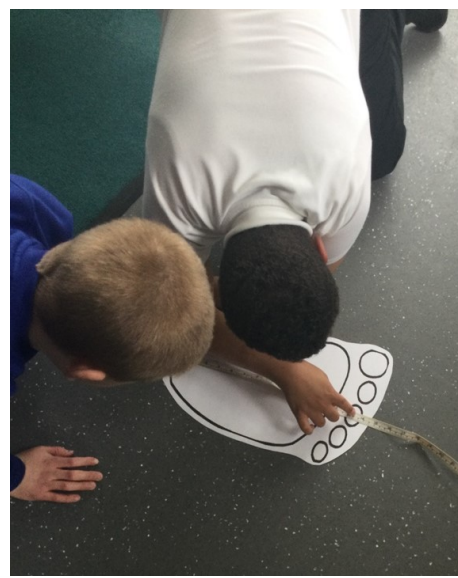
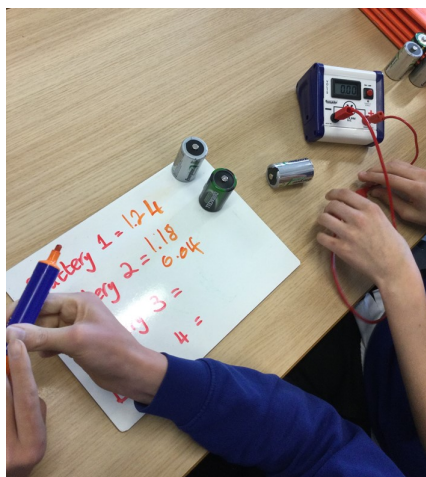
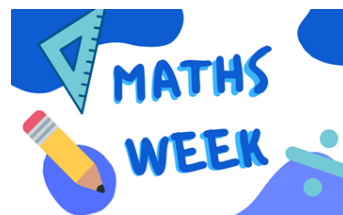
Boundary Way Penn Wolverhampton West Midlands WV4 4NT. Tel No (01902) 558640

Website: www.pennfields.com Email: office@pennfields.com

Issue 27 Friday 7 May 2021

Penn Fields Maths Week

'Maths Week' took over the school and was a great success. Students had many different maths challenges set across the week in not only their maths lessons, but also in other subject areas. Students took part in a number of activities such as having to create their own theme park, exploring if giants are real, taking part in an escape room and seeing how many digits of Pi both students and staff could remember, just to name a few. Below are a number of photos showing students completing the activities set. Well Done Everyone!



**PLEASE
DRIVE
SLOWLY**

When dropping off and collecting your child via car, please ensure you do not skip / drive around the school buses (wait your turn), drive the incorrect way round the car park or park anywhere other than a designated bay.

Word of The Week

Next weeks "word of the week" is Hideous. All Upper School students in their English lessons, will learn the meaning of the word and put it into sentences to check their understanding.

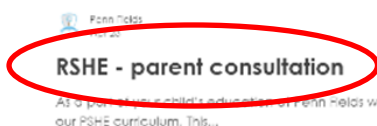
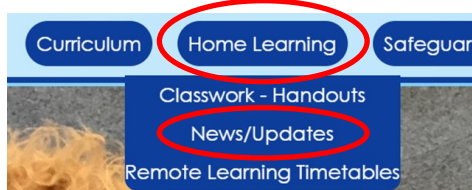


COVID19 Home Testing

If your child is in year 7 or above, please continue to test them from home and report their results online to the NHS and to school via e mail covid@pennfields.com

RSHE parent / carer consultation

The RSHE parent / carer consultation is still live. To share your opinion on RSHE and the proposed school RSHE policy, please visit the school website by following the this link: [RSHE - parent consultation \(pennfields.com\)](https://www.pennfields.com/RSHE-parent-consultation) or by visiting www.pennfields.com clicking on the Home Learning tab—News/Updates and then click on the RSHE - parent consultation. The consultation will remain open for a further week; the school would like to gather as much feedback as possible and your input is key.



Makaton Corner

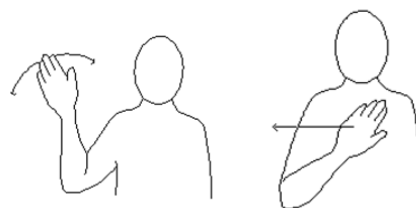
Symbols can be used to support communication in many different ways. Using symbols can help people who have limited speech and those who cannot or prefer not to sign.

Makaton can help with other vital communication skills, such as: eye contact, turn taking, making choices, understanding, and sharing information.

Top tips for signing with your child:

- Don't give up! It may take a while but it is worth it in the end
- Only introduce a few meaningful signs or symbols at a time

For more information on Makaton, please visit: <https://www.makaton.org/>



goodbye

no

Dates for your Diary



Start of Summer Term 1:	Monday 19th April 2021
Half Term:	Monday 31st May 2021 - Friday 4th June 2021
Start of Summer Term 2:	Monday 7th June 2021
INSET Day:	Friday 9th July 2021
End of Summer Term 2:	Friday 16th July 2021 - Lower School Ends at 13:00 / Upper School Ends at 13:30