



# Penn Fields School Newsletter

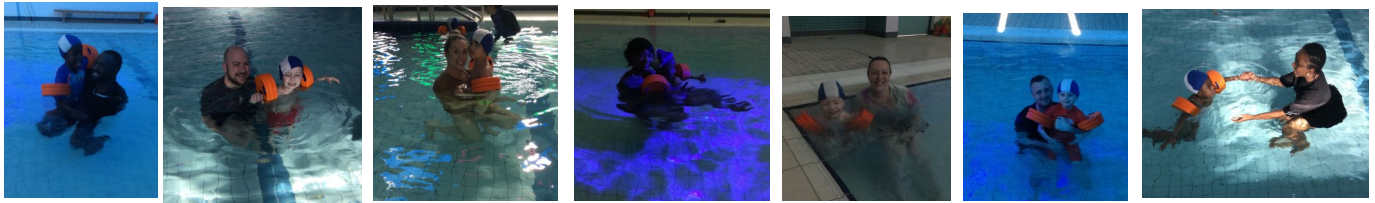
Where every moment is a learning opportunity and that every moment matters

Boundary Way Penn Wolverhampton West Midlands WV4 4NT. Tel No (01902) 558640 Website: [www.pennfields.com](http://www.pennfields.com) Email: [office@pennfields.com](mailto:office@pennfields.com)

Issue 132 Friday 11th April 2025

## Stay and Play Swim Sessions

Primary phase took part in stay and play swim sessions with their parents and carers last week in the school swimming pool. Everyone had a lovely time together playing.



## Music Drop Down Day

Students experienced a day of music this week with an Indian drumming theme. Students took part in a variety of cultural activities such as making drums, listening to music, designing their own music festival, Dhol drumming, Mandala art, making and cooking chapatis and trying Indian foods.



## Computing

Students have been looking at gaming this half term. They have used scratch to create their own games.

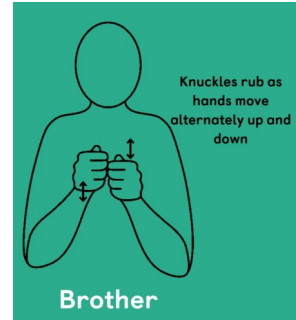
Quiz Time! Can you guess which students we have turned into Minecraft characters?

Students from Key stage 2, 3, 4 and sixth form have all enjoyed coming to Minecraft club this term.





This weeks sign of the week is: **Brother**.  
 For more information about Makaton,  
 videos and signs of the week please visit:  
<https://www.makaton.org/>



### Creative Crowns

Acorn Class have been making Easter crafts this week. Children have made their own Easter crowns by painting, cutting and sticking.



## SEND Sports Provision

**FREE**

**Football:**

- Monday
  - 5-6pm – Under 16
  - 6-7pm – 16+
- City of Wolverhampton College, Wellington Road, WV14 6BT

For more information, please contact Gavin Jones: [gavinjones@wolves.co.uk](mailto:gavinjones@wolves.co.uk) or call 07572 167347

**Multisports:**

- Tuesday
  - 5-6pm – 11-18 years of age
- Ashmore Park Hub, Griffiths Drive, Ashmore Park, WV11 2LH
- Thursday
  - 5-6pm – 11-18 years of age
- Football & Multisports
- Wolves Foundation Arena, WVActive, Aldersley Road, WV6 9NW

Wolves Foundation COMMUNITY FUND

### Save the date -Cost of Living Event



There will be a cost of living event in school for parents and carers to attend on Friday 9<sup>th</sup> May from 9.15 – 11.15. More information will follow.

### Spring Term 2025

#### Spring Term Time:

Monday 24 February to Friday 11 April

**Friday 11 April—School Closes Early -Early Closure Times: Lower School 12.45pm - Upper School 1.15pm**

**Summer Term Time:** Tuesday 29th April—Friday 23 May

**Monday 28th April— Inset Day -School Closed**

**Monday 5th May - Bank Holiday—School Closed**

Friday 9th May –Cost of Living Event 9.15-11.15

Monday 2nd June - Friday 18th July

